



ENVIRONMENTAL PRODUCT DECLARATION

UN CPC CODE:

369

REGISTRATION NUMBER

Environdec: S-P-01604
ECO Platform: 00000975

REGISTRATION DATE

22/07/2019

REVISION DATE

08/08/2019 (V. 5)

REFERENCE YEAR

2017

VALID UNTIL

04/07/2024

FLAGON® PVC

Environmental Product Declaration in accordance with ISO 14025



SOPREMA
GROUP

GENERAL INFORMATION

EPD OWNER

Soprema s.r.l., Via industriale dell'Isola 3, 24040 Chignolo d'Isola (BG), Italy

PROGRAMME OPERATOR

The International EPD® System, Valhallavägen 81, 114 27 Stockholm, Sweden

REFERENCE DOCUMENT

Standard EN 15804:2012+A1:2013

PRODUCT CATEGORY RULES (PCRs)

- PCR 2012:01 v 2.3

FUNCTIONAL UNIT

The functional unit is 1 m² of installed membrane (namely 1 m² produced multiplied by the membrane installation overlapping factor 1.12 (mechanically-fixed), 1.08 (fully-adhered and loose-laid)) for all waterproofing systems with flexible sheets for roofing, divided by the reference building service lifetime (90 years).

CONTACTS

For additional information relative to the activities of the Soprema s.r.l. or in regards to this environmental declaration, please contact: Roberto Baronio – rbaronio@soprema.it

TECHNICAL SUPPORT

by Life Cycle Engineering (www.lcengineering.eu)

VERIFICATION

Independent verification of the declaration and data, according to ISO 14025:2006

EPD process certification for EPD verification

Third party verifier: ICMQ

Accredited or approved by: ACCREDIA. For individual verifiers: "The International EPD® System"

EPDs within the same product category but from different programmes may not be comparable

EPD of construction products may not be comparable if they do not comply with EN 15804

REFERENCES

G.L. Baldo, M. Marino, S. Rossi; "Analisi del ciclo di vita LCA – Nuova edizione aggiornata"; Edizioni Ambiente; 2008

General Programme Instructions for the International EPD® System v. 2.5, 2015

Product Category Rules PCR 2012:01 v 2.3 "Construction products and construction services"

PCR 2014:12 v 1.0 "Flexible sheets for waterproofing - bitumen, plastic or rubber sheets for roof waterproofing"

Product Category Rules PCR 2007:08 v 3.1 "Electricity, steam and hot/cold water generation and distribution"

EN15804:2012 + A1:2013

ISO 14040:2006

ISO 14044:2017

ISO 14025:2010

THE COMPANY

Soprema is an independent group established in 1908 and now present in 90 countries worldwide. Thanks to its 59 production plants, Soprema successfully satisfies the construction sector needs, providing a wide range of waterproofing and insulation products. At present, Soprema is waterproofing membranes world leader.

Soprema is present in Italy since 2007. Here, under the brand of FLAG, it produces synthetic waterproofing membranes in PVC or TPO. Such products are ready to be employed in most residential and domestic sectors: roofing, underground and hydraulic works, both for internal and external purposes.

Since the beginnings in 1963, FLAG had a central role in the waterproofing membranes sector, becoming over the years a key player in the European market. Being part of Soprema Group allowed FLAG to penetrate the worldwide market.

On the basis of the end-use applications, many different waterproofing membranes typologies are available. Firstly, those products can be divided as **reinforced** and **homogeneous** membranes. The former, reinforced either with glass wool or polyester fleeces, is chiefly employed for industrial or domestic roofing. The latter instead are mainly used for hydraulic works and civil engineering.

Secondly, membranes can be either **PVC-** or **TPO-**based, with the former being the standard material for synthetic membranes and the latter (namely Thermoplastic PolyOlefins) being introduced only since late '90s. In both cases, over the years Soprema achieved the experience to ensure the high standards of quality and laying time requested by modern constructions and works.

Recently, FLAG changed name Soprema s.r.l.



SCOPE AND TYPE OF EPD

| PRODUCT STAGE | | | CONSTRUCTION PROCESS STAGE | USE STAGE | | | | | | | | END OF LIFE STAGE | | | | BENEFITS AND LOADS BEYOND THE SYSTEM BOUNDARIES |
|---------------------|-----------|---------------|-------------------------------------|-----------|-----|-------------|--------|-------------|---------------|------------------------|-----------------------|----------------------------|-----------|------------------|----------|---|
| Raw material supply | Transport | Manufacturing | Transport from the gate to the site | Assembly | Use | Maintenance | Repair | Replacement | Refurbishment | Operational energy use | Operational water use | De-construction demolition | Transport | Waste processing | Disposal | Reuse-Recovery-Recycling potential |
| A1 | A2 | A3 | A4 | A5 | B1 | B2 | B3 | B4 | B5 | B6 | B7 | C1 | C2 | C3 | C4 | D |
| ✓ | ✓ | ✓ | ✓ | ✓ | MND | MND | MND | ✓ | MND | MND | MND | MND | ✓ | MND | ✓ | MND |

6

GEOGRAPHICAL SCOPE

Global

SOFTWARE

Simapro 9

DATABASE

Ecoinvent 3.5, Plastics Europe

FUNCTIONAL UNIT

1 m² roof waterproofing installed with flexible sheets for roofing, with a reference roof service life of 90 years. The membrane is supposed to be renewed every 30 years. Moreover, the former sheet is replaced with the new one, which goes on to the End of Life phase. However, both roof and membrane service life values are provided by PCR 2014:12 and used exclusively for calculations. They may not be representative of the actual service lifetimes. Service lifetime is also influenced by design and use conditions and regular maintenance according to the manufacturer's indications.

The LCA study includes all the processes ("cradle to grave" approach) according to EN15804 as presented in the table above.



PRODUCTS

Object of this EPD® are the following membranes, that differ in the installation method, thus in the end-use:

FLAGON® PVC SR

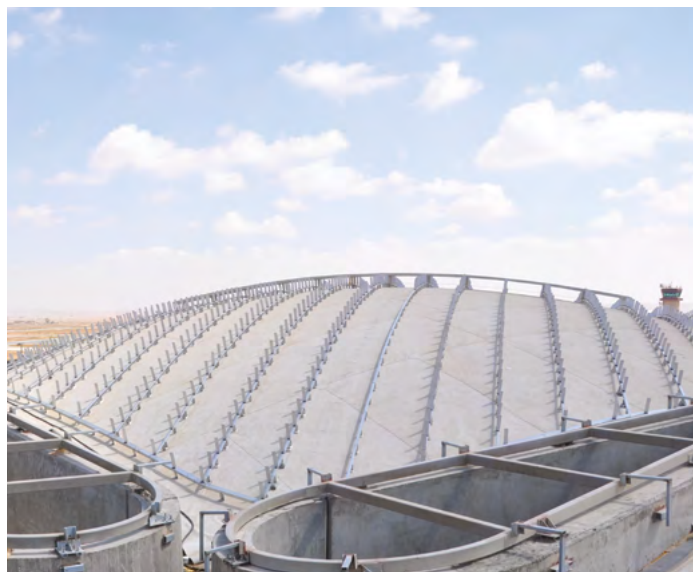
REINFORCED WITH POLYESTER NET, UV-RESISTANT.



MECHANICALLY-FIXED

INSTALLATION PROCESS

Suitable for flat or sloped roofing. The waterproofing system is mechanically fixed to the support, in order to prevent the wind from removing or damaging it. Such system must resist to atmospheric agents and UV rays, as well as to a moderate pedestrian use due to maintenance.

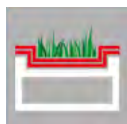


FLAGON® PVC SV/SA-300

(AVERAGE BETWEEN TWO PRODUCT FAMILIES)



LOOSE-LAID WITH GRAVEL



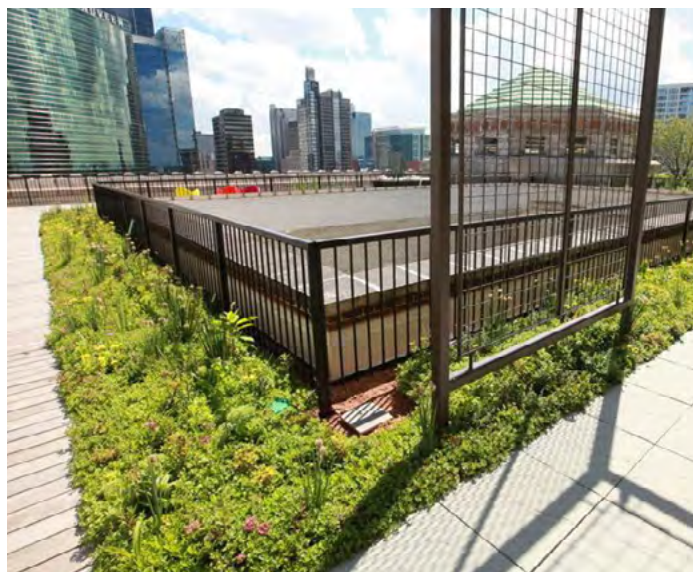
LOOSE-LAID FOR HANGING GARDENS/GREEN ROOFS



LOOSE-LAID FOR PEDESTRIAN ZONES

INSTALLATION PROCESS

Suitable for sub-flat (max 5% slope) roofing. On the basis of their final use (pedestrian zones, hanging gardens, parking lots, etc), the membranes are fixed with different materials. In any case, they must be protected from any potential damage their final use can cause them.



FLAGON® PVC membranes were initially used in the constructions sector. However, their range of applicability expanded considerably over time, serving now also as waterproofing membranes for roofing, both for external and internal uses.

General features of FLAGON® PVC are high degradation and atmospheric conditions resistance, high mechanical resistance, flexibility at low temperatures. In addition, they are rotproof, insensible to hot-cold cycles and resistant to roots growing and microorganisms attacks. They are also hot air-weldable and glueable, thus fostering flame-free construction-sites. However, there are products which are characterised by some peculiar features, being for instance UV-resistant or fireproof.

In addition, a wide range of colours (RAL list) are available upon request.

SPECIFICATION OF THE PRODUCT

In the table, components used for the membranes production are shown. Among the wide range of thicknesses each **Flagon® membrane is produced, only membranes 1.5 mm-thick are studied in this work.** In addition, since each membrane is available in a wide range of colours, the study was performed on an average-colour membrane.

| RAW MATERIAL | Flagon® SR ** | Flagon® SV/SA-300* |
|--------------------------------|---------------|--------------------|
| PVC | 51% | 51% |
| Additives and charges | 46% | 48% |
| Reinforcing material | 3% | - |
| Polypropylene non-woven fabric | - | <1% |

*Average between two product families including SV, SA-300

**Product family which includes SR, SR DE, SR FR M2, SR SC, SR ST SC



PRODUCTION PROCESS

FLAGON® SA-300 is produced in Chignolo d'Isola's plant Line 1, while FLAGON® SR and SV in Line 2, which is almost entirely devoted to those membranes production.

The scheme below shows the synthetic membranes manufacturing process, characteristic of both production lines. A single-layer homogeneous membrane is obtained, whose thickness is regulated by calender and co-extrusion die control devices.

A non-woven fabrics-coupling is possible for line 1 products (such as FLAGON® SA-300). The exclusive production method created by FLAG

allows the direct co-extrusion on both reinforcing material sides, so as to achieve its complete embedment, peculiar feature of all reinforced FLAGON® PVC membranes (such as FLAGON® SR).

The co-extrusion allows also the manufacturing of FLAGON® PVC membranes in a two-tone version: production of monolayer membranes with different chemical-physical properties on the two sides (signal-layer technique).

This system permits the immediate recognition of potential membrane damages (holes or lacerations), since the underlying dark colour would appear.

EXTRUSION CHAMBER LOADING

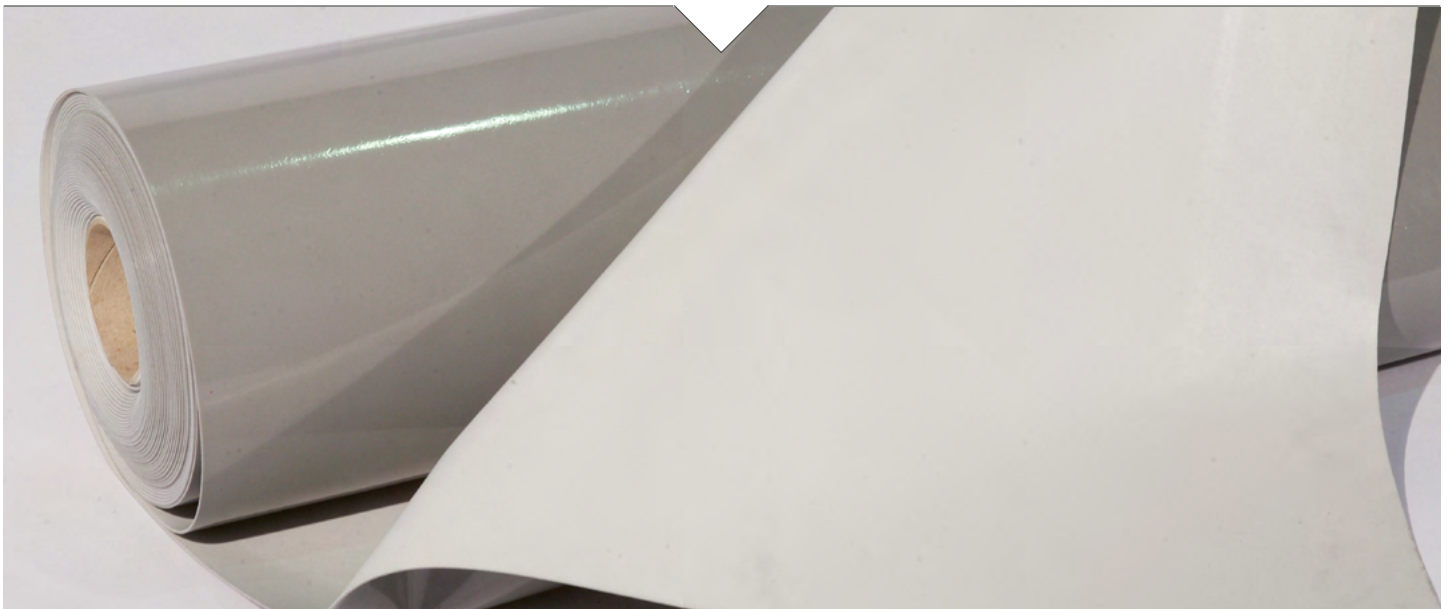
EACH CHAMBER LOADED WITH THE RAW MATERIALS MIXTURE, BY MEANS OF A HOPPER

CO-EXTRUSION

MIXTURE HEATED AND COMPRESSED BY SCREW, THEN FORCED TO A CO-EXTRUSION DIE, WHERE THE EXTRUDERS CONVERGE

LAMINATING

USING A CALENDER, THE DESIRED THICKNESS IS OBTAINED



FLAGON® SR

ENVIRONMENTAL IMPACT

| IMPACT CATEGORY | UNIT | PRODUCT STAGE | | | CONSTRUCTION PROCESS STAGE | | USE STAGE | END OF LIFE STAGE | |
|-----------------|-------------------------------------|---------------|----------|----------|----------------------------|----------|-----------|-------------------|----------|
| | | A1 | A2 | A3 | A4 | A5 | B4 | C2 | C4 |
| GWP | kg CO ₂ eq | 5.99E-02 | 1.71E-03 | 4.28E-03 | 3.82E-03 | 2.59E-03 | 1.45E-01 | 6.35E-04 | 4.32E-03 |
| ODP | kg CFC-11 eq | 2.34E-08 | 3.22E-10 | 5.31E-11 | 7.19E-10 | 1.89E-11 | 4.89E-08 | 1.19E-10 | 2.65E-11 |
| AP | kg SO ₂ eq | 1.87E-04 | 7.44E-06 | 9.14E-06 | 1.79E-05 | 1.38E-06 | 4.46E-04 | 2.82E-06 | 1.66E-06 |
| EP | kg PO ₄ ³⁻ eq | 5.54E-05 | 1.51E-06 | 8.69E-07 | 3.61E-06 | 1.73E-07 | 1.23E-04 | 5.77E-07 | 1.93E-06 |
| POCP | kg C ₂ H ₄ eq | 1.47E-05 | 2.48E-07 | 4.79E-07 | 5.80E-07 | 1.05E-07 | 3.21E-05 | 9.09E-08 | 7.53E-07 |
| ADPe | kg Sb eq | 3.89E-09 | 3.41E-12 | 1.93E-10 | 7.62E-12 | 1.66E-09 | 1.15E-08 | 1.26E-12 | 2.19E-12 |
| ADPf | MJ | 1.45E+00 | 2.43E-02 | 6.21E-02 | 5.44E-02 | 4.61E-03 | 3.19E+00 | 8.99E-03 | 2.74E-03 |

CAPTION:

GWP: 1E+01 is equal to $1 \times 10^1 = 1 \times 10 = 10 \text{ kg CO}_2\text{eq/m}^2 / \text{year}$

- GWP** Global Warming Potential
- ODP** Ozone Depletion Potential
- AP** Acidification Potential
- EP** Eutrophication Potential
- POCP** Photochemical Ozone Creation Potential
- ADPE** Abiotic Depletion Potential - Non fossil resources (elements)
- ADPF** Abiotic Depletion Potential - Fossil fuels

FLAGON® SR

USE OF RESOURCES

| | | PRODUCT STAGE | | | CONSTRUCTION PROCESS STAGE | | USE STAGE | END OF LIFE STAGE | |
|-----------------|----------------|---------------|----------|----------|----------------------------|----------|-----------|-------------------|----------|
| IMPACT CATEGORY | UNIT | A1 | A2 | A3 | A4 | A5 | B4 | C2 | C4 |
| PERE | MJ | 9.81E-02 | 6.38E-05 | 6.60E-04 | 1.43E-04 | 3.03E-04 | 1.98E-01 | 2.36E-05 | 1.50E-04 |
| PERM | MJ | 1.49E-02 | 0.00E+00 | 1.87E-03 | 0.00E+00 | 0.00E+00 | 3.36E-02 | 0.00E+00 | 0.00E+00 |
| PERT | MJ | 1.13E-01 | 6.38E-05 | 2.53E-03 | 1.43E-04 | 3.03E-04 | 2.32E-01 | 2.36E-05 | 1.50E-04 |
| PENRE | MJ | 1.29E+00 | 2.44E-02 | 1.86E-02 | 5.47E-02 | 5.10E-03 | 2.78E+00 | 9.04E-03 | 3.39E-03 |
| PENRM | MJ | 2.90E-01 | 0.00E+00 | 5.11E-02 | 0.00E+00 | 0.00E+00 | 6.83E-01 | 0.00E+00 | 0.00E+00 |
| PENRT | MJ | 1.58E+00 | 2.44E-02 | 6.97E-02 | 5.47E-02 | 5.10E-03 | 3.47E+00 | 9.04E-03 | 3.39E-03 |
| SM | kg | 0.00E+00 | 0.00E+00 | 0.00E+00 | 0.00E+00 | 0.00E+00 | 0.00E+00 | 0.00E+00 | 0.00E+00 |
| RSF | MJ | 0.00E+00 | 0.00E+00 | 0.00E+00 | 0.00E+00 | 0.00E+00 | 0.00E+00 | 0.00E+00 | 0.00E+00 |
| NRSF | MJ | 0.00E+00 | 0.00E+00 | 0.00E+00 | 0.00E+00 | 0.00E+00 | 0.00E+00 | 0.00E+00 | 0.00E+00 |
| FW | m ³ | 1.86E-03 | 1.15E-06 | 9.96E-06 | 2.59E-06 | 2.91E-06 | 3.74E-03 | 4.26E-07 | 6.58E-07 |

- PERE** Renewable energy (carrier)
- PERM** Renewable energy (feedstock)
- PERT** Renewable energy (total)
- PENRE** Non-renewable energy (carrier)
- PENRM** Non-renewable energy (feedstock)
- PENRT** Non-renewable energy (total)
- SM** Use of secondary materials
- RSF** Use of renewable secondary fuels
- NRSF** Use of non-renewable secondary fuels
- FW** Use of Net Fresh Water

FLAGON® SR

OUTPUT FLOWS AND WASTE PRODUCTION

| IMPACT CATEGORY | UNIT | PRODUCT STAGE | | | CONSTRUCTION PROCESS STAGE | | USE STAGE | END OF LIFE STAGE | |
|-----------------|------|---------------|----------|----------|----------------------------|----------|-----------|-------------------|----------|
| | | A1 | A2 | A3 | A4 | A5 | B4 | C2 | C4 |
| CRU | kg | 0.00E+00 | 0.00E+00 | 0.00E+00 | 0.00E+00 | 0.00E+00 | 0.00E+00 | 0.00E+00 | 0.00E+00 |
| MFR | kg | 0.00E+00 | 0.00E+00 | 0.00E+00 | 0.00E+00 | 0.00E+00 | 0.00E+00 | 0.00E+00 | 0.00E+00 |
| MER | kg | 0.00E+00 | 0.00E+00 | 0.00E+00 | 0.00E+00 | 0.00E+00 | 0.00E+00 | 0.00E+00 | 0.00E+00 |
| EE* | MJ | 0.00E+00 | 0.00E+00 | 0.00E+00 | 0.00E+00 | 0.00E+00 | 0.00E+00 | 0.00E+00 | 0.00E+00 |

*Since EE is equal to zero there is no need to specify thermal and electrical energy

12

| IMPACT CATEGORY | UNIT | PRODUCT STAGE | | | CONSTRUCTION PROCESS STAGE | | USE STAGE | END OF LIFE STAGE | |
|-----------------|------|---------------|----------|----------|----------------------------|----------|-----------|-------------------|----------|
| | | A1 | A2 | A3 | A4 | A5 | B4 | C2 | C4 |
| HWD | kg | 2.20E-09 | 0.00E+00 | 0.00E+00 | 0.00E+00 | 0.00E+00 | 4.41E-09 | 0.00E+00 | 0.00E+00 |
| NHWD | kg | 4.87E-04 | 0.00E+00 | 5.71E-03 | 0.00E+00 | 0.00E+00 | 1.24E-02 | 0.00E+00 | 6.73E-02 |
| RWD | kg | 2.81E-07 | 0.00E+00 | 0.00E+00 | 0.00E+00 | 0.00E+00 | 5.61E-07 | 0.00E+00 | 0.00E+00 |

CRU Components For Re-Use

MFR Material For Recycling

MER Materials For Energy Recovery

EE Exported Energy

HWD Hazardous Waste Disposed

NHWD Non-Hazardous Waste Disposed

RWD Radioactive Waste Disposed

FLAGON® SV/SA-300

ENVIRONMENTAL IMPACT

| | | PRODUCT STAGE | | | CONSTRUCTION PROCESS STAGE | | USE STAGE | END OF LIFE STAGE | |
|-----------------|-------------------------------------|---------------|----------|----------|----------------------------|----------|-----------|-------------------|----------|
| IMPACT CATEGORY | UNIT | A1 | A2 | A3 | A4 | A5 | B4 | C2 | C4 |
| GWP | kg CO ₂ eq | 5.38E-02 | 1.64E-03 | 4.08E-03 | 3.32E-03 | 5.05E-03 | 1.36E-01 | 2.42E-02 | 4.18E-03 |
| ODP | kg CFC-11 eq | 1.36E-08 | 3.10E-10 | 4.31E-11 | 6.16E-10 | 3.69E-10 | 2.98E-08 | 4.54E-09 | 2.82E-11 |
| AP | kg SO ₂ eq | 1.58E-04 | 7.16E-06 | 8.62E-06 | 1.83E-05 | 1.56E-05 | 4.15E-04 | 1.08E-04 | 1.75E-06 |
| EP | kg PO ₄ ³⁻ eq | 5.41E-05 | 1.45E-06 | 7.99E-07 | 3.29E-06 | 2.71E-06 | 1.25E-04 | 2.20E-05 | 1.90E-06 |
| POCP | kg C ₂ H ₄ eq | 1.31E-05 | 2.39E-07 | 4.56E-07 | 5.88E-07 | 5.30E-07 | 2.99E-05 | 3.47E-06 | 7.28E-07 |
| ADPe | kg Sb eq | 6.89E-09 | 3.28E-12 | 1.86E-10 | 6.52E-12 | 1.34E-09 | 1.68E-08 | 4.81E-11 | 2.28E-12 |
| ADPF | MJ | 1.31E+00 | 2.34E-02 | 5.93E-02 | 4.71E-02 | 4.05E-02 | 2.97E+00 | 3.43E-01 | 2.92E-03 |

CAPTION:

GWP: 1E+01 is equal to $1 \times 10^1 = 1 \times 10 = 10 \text{ kg CO}_2\text{eq/m}^2/\text{year}$

- GWP** Global Warming Potential
- ODP** Ozone Depletion Potential
- AP** Acidification Potential
- EP** Eutrophication Potential
- POCP** Photochemical Ozone Creation Potential
- ADPE** Abiotic Depletion Potential - Non fossil resources (elements)
- ADPF** Abiotic Depletion Potential - Fossil fuels

FLAGON® SV/SA-300

USE OF RESOURCES

| | | PRODUCT STAGE | | | CONSTRUCTION PROCESS STAGE | | USE STAGE | END OF LIFE STAGE | |
|-----------------|------|---------------|----------|----------|----------------------------|----------|-----------|-------------------|----------|
| IMPACT CATEGORY | UNIT | A1 | A2 | A3 | A4 | A5 | B4 | C2 | C4 |
| PERE | MJ | 8.35E-02 | 6.14E-05 | 5.68E-04 | 1.21E-04 | 1.13E-02 | 1.91E-01 | 9.01E-04 | 1.54E-04 |
| PERM | MJ | 1.54E-02 | 0.00E+00 | 1.87E-03 | 0.00E+00 | 0.00E+00 | 3.46E-02 | 0.00E+00 | 0.00E+00 |
| PERT | MJ | 9.89E-02 | 6.14E-05 | 2.44E-03 | 1.21E-04 | 1.13E-02 | 2.26E-01 | 9.01E-04 | 1.54E-04 |
| PENRE | MJ | 1.14E+00 | 2.35E-02 | 1.55E-02 | 4.74E-02 | 9.80E-02 | 2.65E+00 | 3.45E-01 | 3.60E-03 |
| PENRM | MJ | 2.69E-01 | 0.00E+00 | 5.11E-02 | 0.00E+00 | 0.00E+00 | 6.41E-01 | 0.00E+00 | 0.00E+00 |
| PENRT | MJ | 1.41E+00 | 2.35E-02 | 6.66E-02 | 4.74E-02 | 9.80E-02 | 3.29E+00 | 3.45E-01 | 3.60E-03 |
| SM | kg | 0.00E+00 | 0.00E+00 | 0.00E+00 | 0.00E+00 | 0.00E+00 | 0.00E+00 | 0.00E+00 | 0.00E+00 |
| RSF | MJ | 0.00E+00 | 0.00E+00 | 0.00E+00 | 0.00E+00 | 0.00E+00 | 0.00E+00 | 0.00E+00 | 0.00E+00 |
| NRSF | MJ | 0.00E+00 | 0.00E+00 | 0.00E+00 | 0.00E+00 | 0.00E+00 | 0.00E+00 | 0.00E+00 | 0.00E+00 |
| FW | m³ | 1.77E-03 | 1.11E-06 | 9.57E-06 | 2.32E-06 | 1.28E-03 | 6.13E-03 | 1.63E-05 | 6.94E-07 |

- PERE** Renewable energy (carrier)
- PERM** Renewable energy (feedstock)
- PERT** Renewable energy (total)
- PENRE** Non-renewable energy (carrier)
- PENRM** Non-renewable energy (feedstock)
- PENRT** Non-renewable energy (total)
- SM** Use of secondary materials
- RSF** Use of renewable secondary fuels
- NRSF** Use of non-renewable secondary fuels
- FW** Use of Net Fresh Water

FLAGON® SV/SA-300

OUTPUT FLOWS AND WASTE PRODUCTION

| | | PRODUCT STAGE | | | CONSTRUCTION PROCESS STAGE | | USE STAGE | END OF LIFE STAGE | |
|-----------------|------|---------------|----------|----------|----------------------------|----------|-----------|-------------------|----------|
| IMPACT CATEGORY | UNIT | A1 | A2 | A3 | A4 | A5 | B4 | C2 | C4 |
| CRU | kg | 0.00E+00 | 0.00E+00 | 0.00E+00 | 0.00E+00 | 0.00E+00 | 0.00E+00 | 0.00E+00 | 0.00E+00 |
| MFR | kg | 0.00E+00 | 0.00E+00 | 0.00E+00 | 0.00E+00 | 0.00E+00 | 0.00E+00 | 0.00E+00 | 0.00E+00 |
| MER | kg | 0.00E+00 | 0.00E+00 | 0.00E+00 | 0.00E+00 | 0.00E+00 | 0.00E+00 | 0.00E+00 | 0.00E+00 |
| EE* | MJ | 0.00E+00 | 0.00E+00 | 0.00E+00 | 0.00E+00 | 0.00E+00 | 0.00E+00 | 0.00E+00 | 0.00E+00 |

*Since EE is equal to zero there is no need to specify thermal and electrical energy

| | | PRODUCT STAGE | | | CONSTRUCTION PROCESS STAGE | | USE STAGE | END OF LIFE STAGE | |
|-----------------|------|---------------|----------|----------|----------------------------|----------|-----------|-------------------|----------|
| IMPACT CATEGORY | UNIT | A1 | A2 | A3 | A4 | A5 | B4 | C2 | C4 |
| HWD | kg | 0.00E+00 | 0.00E+00 | 0.00E+00 | 0.00E+00 | 0.00E+00 | 0.00E+00 | 0.00E+00 | 0.00E+00 |
| NHWD | kg | 0.00E+00 | 0.00E+00 | 5.76E-04 | 0.00E+00 | 0.00E+00 | 1.15E-03 | 0.00E+00 | 6.96E-02 |
| RWD | kg | 0.00E+00 | 0.00E+00 | 0.00E+00 | 0.00E+00 | 0.00E+00 | 0.00E+00 | 0.00E+00 | 0.00E+00 |

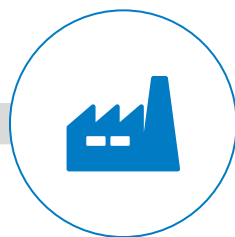
- CRU** Components For Re-Use
- MFR** Material For Recycling
- MER** Materials For Energy Recovery
- EE** Exported Energy

- HWD** Hazardous Waste Disposed
- NHWD** Non-Hazardous Waste Disposed
- RWD** Radioactive Waste Disposed

CALCULATION RULES



A1
UPSTREAM
Process



A2+A3
CORE
Process



A4
TRANSPORT
to end users



16

LCA METHODOLOGY

CUT-OFF RULES

LCA model has been processed considering all main input/output associated with core process in accordance with the threshold valued stated in PCR 2012:01 v2.3 (ch. 7.6), namely the sum of the excluded material flows to the core module shall not exceed 1% of mass and energy.

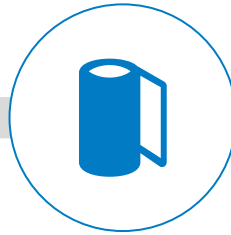
Hence, the following aspects were considered negligible:

- Production of packaging for the raw materials input process, except for PE packaging film;
- Drill electricity consumption related to mechanical installation;
- Water emissions from core process.





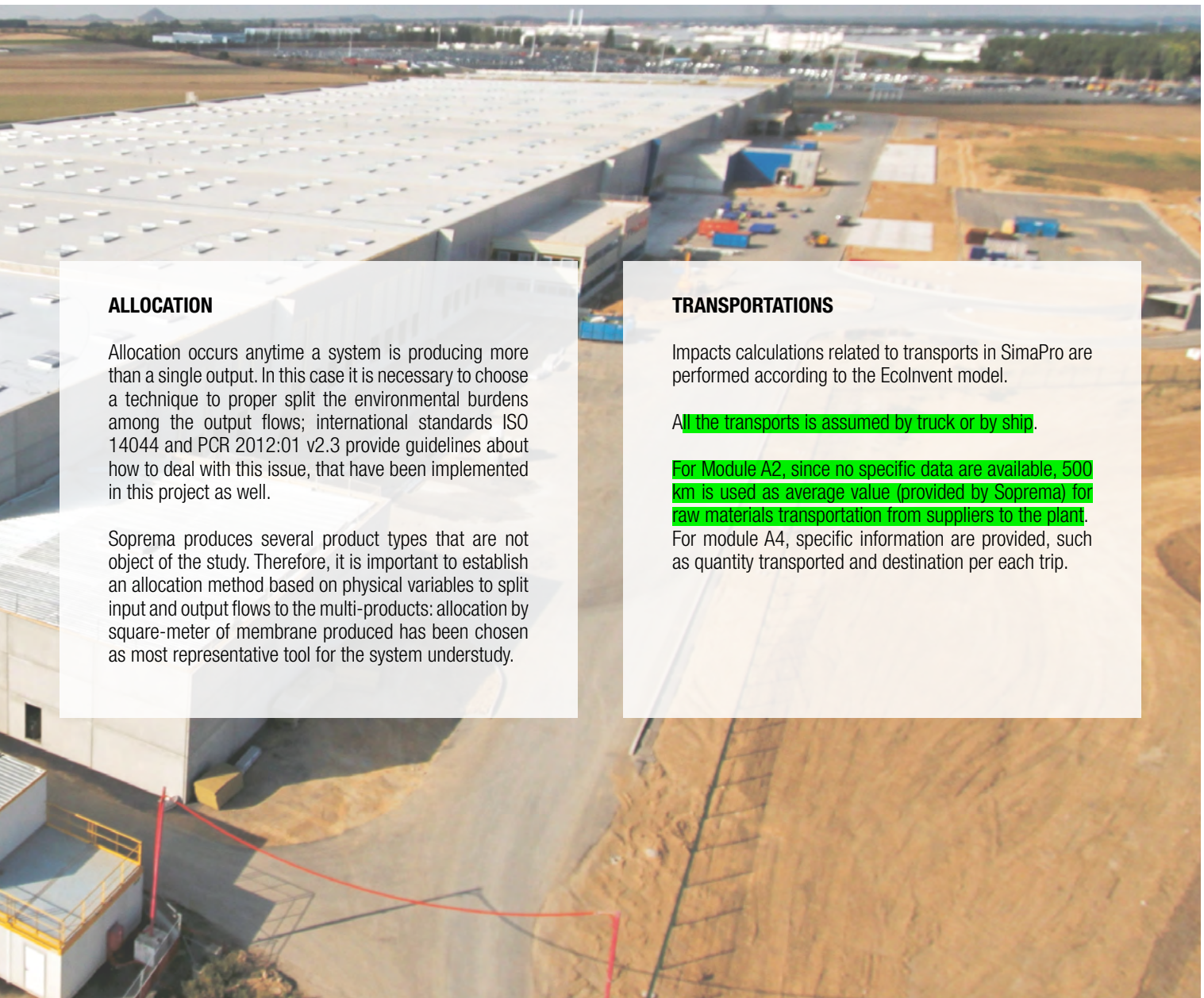
A5
INSTALLATION
 Process



B4
USE
 Stage



C2+C4
END OF LIFE
 Stage



ALLOCATION

Allocation occurs anytime a system is producing more than a single output. In this case it is necessary to choose a technique to proper split the environmental burdens among the output flows; international standards ISO 14044 and PCR 2012:01 v2.3 provide guidelines about how to deal with this issue, that have been implemented in this project as well.

Soprema produces several product types that are not object of the study. Therefore, it is important to establish an allocation method based on physical variables to split input and output flows to the multi-products: allocation by square-meter of membrane produced has been chosen as most representative tool for the system understudy.

TRANSPORTATIONS

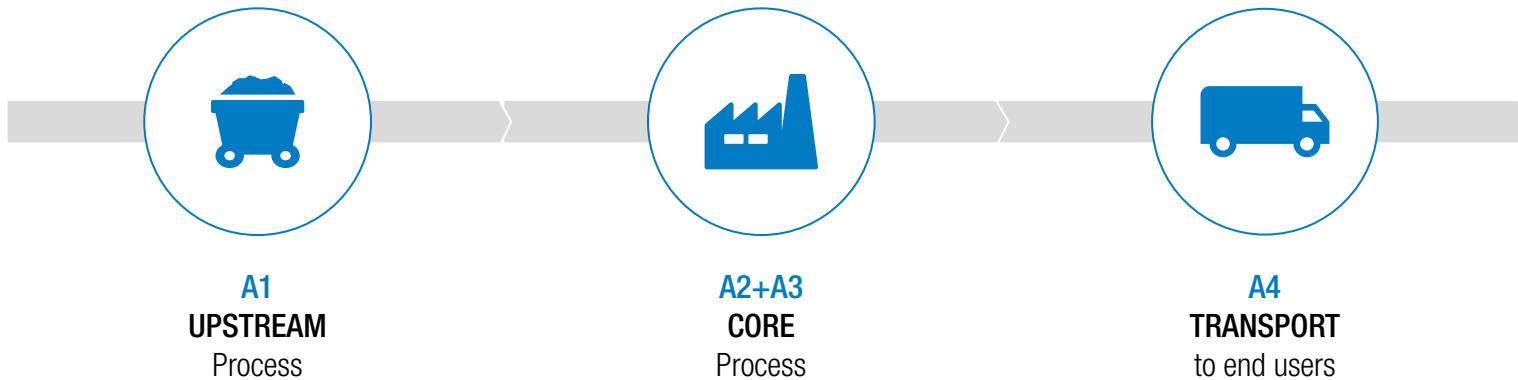
Impacts calculations related to transports in SimaPro are performed according to the EcolInvent model.

All the transports is assumed by truck or by ship.

For Module A2, since no specific data are available, 500 km is used as average value (provided by Soprema) for raw materials transportation from suppliers to the plant.

For module A4, specific information are provided, such as quantity transported and destination per each trip.

CALCULATION RULES



PRODUCT STAGE

18

A1

- RAW MATERIALS SUPPLY
- GENERATION OF ELECTRICITY FROM NATIONAL GRID
- NG SUPPLY FOR INTERNAL CHP SYSTEM



A2+ A3

- RAW MATERIALS TRANSPORT TO PLANT 500 KM BY TRUCK (A2);
- MANUFACTURING PROCESS;
- ELECTRICITY AND HEAT GENERATION FROM CHP SYSTEM;
- WATER USAGE;
- EMISSIONS TO AIR;
- MANUFACTURING PROCESS WASTE TREATMENT, CONSIDERING ALSO WASTE TRANSPORT (50 KM BY TRUCK)

CHIGNOLO D'ISOLA POWER PLANT (CHP SYSTEM)

According to the diagnoses and data-gatherings performed by Soprema on Chignolo d'Isola plant, one kWh of electricity per square meter of final product is modelled as 66% supplied by national grid (considered in A1 module) and 34% produced internally by the CHP system (considered in A3 module).

Soprema Power Plant is based on a combined cycle technology (electricity and thermal). The most relevant issue concerning CHP technology is how to allocate the environmental impact due to fuel combustion, since a multi-output is present. The approach suggested by PCR 2007:08 provided by the International EPD® System was chosen for this project. A dedicated emission factor is computed for both heat and power, according to the amount of produced energy for each class. The result of CHP modelling is a specific emission factor for both electrical and thermal energy, namely the quantity of methane to be burned to produce 1 kWh of energy carrier. This latter parameter is strictly related to CHP system efficiency. Furthermore, part of the gas purchased by the plant is burned in boilers and used mainly by production line 2 (Flagon® SR/SV). These boilers were modelled using Ecoinvent (version 2.2) database.



A5
INSTALLATION
 Process



B4
USE
 Stage



C2+C4
END OF LIFE
 Stage

CONSTRUCTION PROCESS STAGE

A4

MEMBRANES TRANSPORTATION TO END USERS, BY TRUCK AND/OR SHIP



FLAGON®
SR



FLAGON®
SV/SA-300



1150 km

993 km



109 km

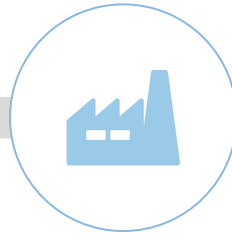
730 km

The distances mentioned above are average values, weighted on the quantity transported

CALCULATION RULES



A1
UPSTREAM
Process



A2+A3
CORE
Process



A4
TRANSPORT
to end users

CONSTRUCTION PROCESS STAGE

20

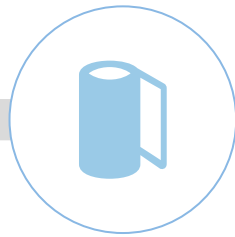
A5

EACH INSTALLATION METHOD IS CHARACTERISED BY SPECIFIC MATERIAL CONSUMPTIONS, SHOWN IN TABLES BELOW. HOWEVER, THEY SHARE THE WELDING MACHINE ELECTRIC CONSUMPTION OF 0.020 kWh/m².

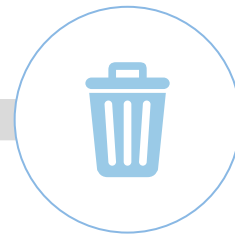




A5
INSTALLATION
Process



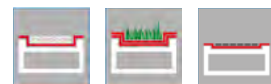
B4
USE
Stage



C2+C4
END OF LIFE
Stage



FLAGON®
SR
MECHANICAL FIXING



FLAGON®
SV/SA-300
LOOSE LAYING



0.0075 kg/m²
NAILS



82 kg/m²
GRAVEL



120 mm
OVERLAP

80 mm
OVERLAP



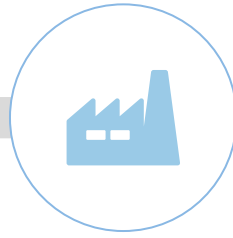
0.020 kWh/m²
ELECTRICITY

0.020 kWh/m²
ELECTRICITY

CALCULATION RULES



A1
UPSTREAM
Process



A2+A3
CORE
Process



A4
TRANSPORT
to end users

USE STAGE

22

B4

ACCORDING TO PCR2014:12 RULES, TWO REPLACEMENTS ARE CONSIDERED IN THIS STUDY. (REPLACEMENT MODULE INCLUDES ALL THE PREVIOUS STAGES DOUBLED (A1,A2,A3,A4 AND A5))



2X

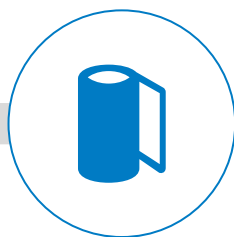
PRODUCT
STAGE

CONSTRUCTION
PROCESS
STAGE





A5
INSTALLATION
 Process



B4
USE
 Stage



C2+C4
END OF LIFE
 Stage

END OF LIFE STAGE

C2+C4

OUT-OF-SERVICE MEMBRANES
 TRANSPORTATION TO TREATMENT SITES
 (50 KM BY TRUCK)



END-OF-LIFE TREATMENT SCENARIOS



FLAGON®
SR



FLAGON®
SV/SA-300



100%
 SANITARY LANDFILL

**The only environmental impact due to recycling process is the waste transportation to the recycling site*



SOPREMA at your disposal

SOPREMA SRL

For all commercial information
contact our offices

You will find all the information on
www.soprema.it

Divisione Manti Sintetici Flag
via Industriale dell'Isola, 3 - 24040 Chignolo d'Isola (Bergamo)
Tel. +39 035.095.10.11
Fax +39 035.494.06.49
Mail info@soprema.it

